

Project Schedule

Activity ID	Description	Original Duration	Start	Finish	Qtr 1, 2010			Qtr 2, 2010			Qtr 3, 2010			Qtr 4, 2010			Qtr 1, 2011			Qtr 2, 2011	
					Jan	Feb	Mar	Apr	May	Jun	Jul	Aug	Sep	Oct	Nov	Dec	Jan	Feb	Mar	Apr	May
Purchase																					
No Building																					
01000.02IO	Phase 1 - Owner's Demolition of Building Superstructure	52	04-Nov-09 A	20-Jan-10 A	Phase 1 - Owner's Demolition of Building Superstructure																
01000.00AO	Proposal Acceptance, Notice of Award by Owner	22	15-Dec-09 A	04-Jan-10 A	Proposal Acceptance, Notice of Award by Owner																
01000.01AO	Presentation of Contract to Contractor by Owner	15	21-Dec-09 A	21-Dec-09 A	Presentation of Contract to Contractor by Owner																
01100.01SG	Submission of Signed Contract and Other Required Documen...	15	04-Jan-10 A	01-Feb-10 A	Submission of Signed Contract and Other Required Documents to Owner by Contractor																
01000.02AO	Sign Contract & Issue Notice to Proceed by Owner	10	07-Jan-10 A	08-Feb-10 A	Sign Contract & Issue Notice to Proceed by Owner																
Request for Interpretation																					
No Building																					
RF001.00RA	RFI 001 Layout of Buildings A & C	14	13-Jan-10 A	22-Apr-10 A	RFI 001 Layout of Buildings A & C																
RF002.00RA	RFI 002 Institutional Products HInge Selection	14	13-Jan-10 A	02-Feb-10 A	RFI 002 Institutional Products HInge Selection																
RF003.00RA	RFI 003 Buildnig "A" Structural/Architectural Conflicts	14	21-Jan-10 A	02-Feb-10 A	RFI 003 Buildnig "A" Structural/Architectural Conflicts																
RF004.00RA	RFI 004 Steel Joist Information Building "A"	14	21-Jan-10 A	02-Feb-10 A	RFI 004 Steel Joist Information Building "A"																
RF005.00RA	RFI 005 Steel Primer Material	14	21-Jan-10 A	02-Feb-10 A	RFI 005 Steel Primer Material																
RF006.00RA	RFI 006 Building "C" Dimension Differences	14	28-Jan-10 A	02-Feb-10 A	RFI 006 Building "C" Dimension Differences																
RF007.00RA	RFI 007 Building "A" Bottom of Continuous Footing Elevations	14	01-Feb-10 A	02-Feb-10 A	RFI 007 Building "A" Bottom of Continuous Footing Elevations																
RF008.00RA	RFI 008 Tube Steel Beam Bearing Info Not Supplied in Resp...	14	05-Feb-10 A	15-Feb-10 A	RFI 008 Tube Steel Beam Bearing Info Not Supplied in Response to RFI #003																
RF009.00RA	RFI 009 Ridge Beam Extension Info Not Supplied in Respons...	14	05-Feb-10 A	15-Feb-10 A	RFI 009 Ridge Beam Extension Info Not Supplied in Response to RFI #003																
RF010.00RA	RFI 010 Bldg C Foundaiton Wall and Finishes	14	10-Feb-10 A	23-Mar-10 A	RFI 010 Bldg C Foundaiton Wall and Finishes																
RF011.00RA	RFI 011 Door Location for Walk-in Cooler	14	10-Feb-10 A	12-Feb-10 A	RFI 011 Door Location for Walk-in Cooler																
RF012.00RA	RFI 012 Electrical Fixtures Bldg A & Bldg C	14	11-Feb-10 A	15-Feb-10 A	RFI 012 Electrical Fixtures Bldg A & Bldg C																
RF013.00RA	RFI 013 Building A W20 Window Frame	14	23-Feb-10 A	24-Mar-10 A	RFI 013 Building A W20 Window Frame																
RF014.00RA	RFI 014 Specification #12 2113 Horizontal Louver Blinds	14	24-Feb-10 A	25-Feb-10 A	RFI 014 Specification #12 2113 Horizontal Louver Blinds																
RF015.00RA	RFI 015 Bldg A Kitchen FS & Waste Plumbing	14	01-Mar-10 A	04-Mar-10 A	RFI 015 Bldg A Kitchen FS & Waste Plumbing																
RF016.00RA	RFI 016 Bldg A Kitchen A-125 wall / equipment conflicts	14	02-Mar-10 A	14-Jun-10 A	RFI 016 Bldg A Kitchen A-125 wall / equipment conflicts																
RF017.00RA	RFI 017 Q-104A vs S-101A Depressed Slab Area	14	08-Mar-10 A	22-Mar-10 A	RFI 017 Q-104A vs S-101A Depressed Slab Area																
RF018.00RA	RFI 018 Bldg C Existing Dimensions Differences	14	10-Mar-10 A	11-Mar-10 A	RFI 018 Bldg C Existing Dimensions Differences																
RF019.00RA	RFI 019 Sheet Note 1 Post Indicator Valve	14	11-Mar-10 A	18-Mar-10 A	RFI 019 Sheet Note 1 Post Indicator Valve																
RF020.00RA	RFI 020 Building G Architectural/Structural Discrepancy	4	16-Mar-10 A	23-Mar-10 A	RFI 020 Building G Architectural/Structural Discrepancy																
RF021.00RA	RFI 021 Building G Corner Trim color	3	17-Mar-10 A	22-Mar-10 A	RFI 021 Building G Corner Trim color																
RF022.00RA	RFI 022 Building A Plumbing Corridination - Icemakers	14	22-Mar-10 A	24-Mar-10 A	RFI 022 Building A Plumbing Corridination - Icemakers																
RF023.00RA	RFI 023 Building A S-101A Stem Wall	3	24-Mar-10 A	27-Sep-10	RFI 023 Building A S-101A Stem Wall																
RF024.00RA	RFI 024 Bldg A countertop discrepancy	7	31-Mar-10 A	05-Apr-10 A	RFI 024 Bldg A countertop discrepancy																
RF025.00RA	RFI 025 Air Barrier Sheet for Stucco Assemblies	7	05-Apr-10 A	05-Apr-10 A	RFI 025 Air Barrier Sheet for Stucco Assemblies																
RF026.00RA	RFI 026 Cast In Place Concrete Color Additive.pdf	3	06-Apr-10 A	11-May-10 A	RFI 026 Cast In Place Concrete Color Additive.pdf																
RF027.00RA	RFI 027 TVSS	15	06-Apr-10 A	22-Apr-10 A	RFI 027 TVSS																
RF028.00RA	RFI 028 Approval of Submittal #23 5533-01	2	07-Apr-10 A	12-Apr-10 A	RFI 028 Approval of Submittal #23 5533-01																
RF029.00RA	RFI 029 Building A Doors 105 and 114	7	09-Apr-10 A	28-Apr-10 A	RFI 029 Building A Doors 105 and 114																
RF030.00RA	RFI 030 Building A Fire Alarm	7	12-Apr-10 A	28-Apr-10 A	RFI 030 Building A Fire Alarm																
RF031.00RA	RFI 031Submittal 09 8400 Acoustical Room Components	7	13-Apr-10 A	28-Apr-10 A	RFI 031Submittal 09 8400 Acoustical Room Components																
RF032.00RA	RFI 032 Audio Visual Mounting Options	7	14-Apr-10 A	28-Apr-10 A	RFI 032 Audio Visual Mounting Options																
RF033.00RA	RFI 033 Bldg A Boy's A109 ADA	14	21-Apr-10 A	29-Apr-10 A	RFI 033 Bldg A Boy's A109 ADA																
RF034.00RA	RFI 034 MCR 003 New Trash Compactor Electrical Requirem...	4	03-May-10 A	05-May-10 A	RFI 034 MCR 003 New Trash Compactor Electrical Requiremeins																
RF035.00RA	RFI 035 Bldg G Fuel Tank Hazardous Location	5	07-May-10 A	13-May-10 A	RFI 035 Bldg G Fuel Tank Hazardous Location																

■ Actual Work ■ Critical Remaining Work
■ Remaining Work ◆ Milestone

Project Schedule

Activity ID	Description	Original Duration	Start	Finish	Qtr 1, 2010		Qtr 2, 2010			Qtr 3, 2010			Qtr 4, 2010			Qtr 1, 2011			Qtr 2, 2011		
					Jan	Feb	Mar	Apr	May	Jun	Jul	Aug	Sep	Oct	Nov	Dec	Jan	Feb	Mar	Apr	May
					RF036.00RA	RFI 036 Bldg F Existing Ceiling Grills	4	10-May-10 A	13-May-10 A												
RF037.00RA	RFI 037 Bldg E Girls E106 adn Boys E105	2	17-May-10 A	02-Jun-10 A																	
RF038.00RA	RFI 038 Bldg B Existing Load Bearing Wall Demo	5	21-May-10 A	03-Jun-10 A																	
RF039.00RA	RFI 039 Building B Existing Radiant Heaters and Unit Heater ...	2	25-May-10 A	03-Jun-10 A																	
RF040.00RA	RFI 040 Existing Schlage Master Key System	8	26-May-10 A	10-Jun-10 A																	
RF041.00RA	RFI 041 Existing Sewer and existing footing conflict	7	27-May-10 A	02-Jun-10 A																	
RF042.00RA	RFI 042 Building B Circuiting	8	03-Jun-10 A	28-Jun-10 A																	
RF043.00RA	RFI 043 Exit Light Switch	8	03-Jun-10 A	24-Jun-10 A																	
RF044.00RA	RFI 044 Building A lintel and jamb details	4	07-Jun-10 A	14-Jun-10 A																	
RF045.00RA	RFI 045 Bldg A Ridge Beam and Steel joist bearing conflict	2	14-Jun-10 A	15-Jun-10 A																	
RF046.00RA	RFI 046 Bldg A Structural Questions	2	15-Jun-10 A	15-Jun-10 A																	
RF047.00RA	RFI 047 Exhaust Fan Existing Openings	2	21-Jun-10 A	22-Jun-10 A																	
RF048.00RA	RFI 048 Mounting Heights for Bldgs A, B & E	2	25-Jun-10 A	01-Jul-10 A																	
RF049.00RA	RFI 049 Restroom Lighting Switching	7	30-Jun-10 A	21-Jul-10 A																	
RF050.00RA	RFI 050 Bldg E Door-Frame Location Discrepancy	7	07-Jul-10 A	21-Jul-10 A																	
RF051.00RA	RFI 051 Bldg A Duct and Ceiling Height Discrepancies	7	09-Jul-10 A	21-Jul-10 A																	
RF052.00RA	RFI 052 Existing Pneumatic controls	7	20-Jul-10 A	27-Sep-10																	
Submittal																					
No Building																					
05500.01SV	Metal Fabrications Submittal 05 5000-01	14	11-Jan-10 A	05-Feb-10 A																	
05210.01SV	Steel Joist Submittal 05 2100-01	2	11-Jan-10 A	26-Feb-10 A																	
05300.01SV	Metal Decking Submittal 05 3000-01	2	11-Jan-10 A	26-Feb-10 A																	
03200.02SV	Rebar Submittal Building "G" 03 2000-02	14	11-Jan-10 A	04-Feb-10 A																	
05521.01SV	Pipe and Tube Railings Submittal 05 5213-01	14	11-Jan-10 A	04-Feb-10 A																	
05120.01SV	Structural Steel Submittal 05 1200-01	14	11-Jan-10 A	26-Feb-10 A																	
03200.01SV	Rebar submittal Building "A" - 03 2000-01	14	25-Jan-10 A	04-Feb-10 A																	
03200.04SV	Rebar submittal Sitework 03 2000-03	14	28-Jan-10 A	05-Feb-10 A																	
08450.01SS	Translucest Wall and Roof Assemblies Submittal 08 4500-01...	14	02-Feb-10 A	11-Mar-10 A																	
08622.01SV	Tubular Skylights Submittal 08 6223.01NOT ACCEPTED	14	03-Feb-10 A	15-Feb-10 A																	
03200.03SV	Rebar submittal Building "C" 03 2000-04	14	03-Feb-10 A	22-Feb-10 A																	
10510.01SS	Lockers Submittal 10 5100-01	14	05-Feb-10 A	11-Feb-10 A																	
08431.01SS	Aluminum-Framed Storefronts Submittal 08_4313-01	14	10-Feb-10 A	24-Feb-10 A																	
08800.01SS	Glazing Submittal 08_8000-01	14	10-Feb-10 A	24-Feb-10 A																	
22106.01SS	Plumbing Piping Specialties Submittal 22 1006-01	14	12-Feb-10 A	18-Feb-10 A																	
22300.01SS	Plumbing Equipment Submittal 22 3000-01NOT ACCEPTED	14	12-Feb-10 A	17-Feb-10 A																	
23330.01SS	Air Duct Accessories Submittal 23_3300-01	14	12-Feb-10 A	22-Feb-10 A																	
22400.01SS	Plumbing Fixtures Submittal 22 4000-01	14	12-Feb-10 A	18-Feb-10 A																	
22071.01SS	Plumbing Piping Insulation Submittal 22 0719-01	14	12-Feb-10 A	18-Feb-10 A																	
22100.01SS	Plumbing Piping Submittal 22 1005-01	14	12-Feb-10 A	17-Feb-10 A																	
23071.01SS	Duct Insulation Submittal 23 0713-01	14	12-Feb-10 A	18-Feb-10 A																	
23211.01SS	Hydronic Piping Submittal 23_2113-01	14	12-Feb-10 A	23-Feb-10 A																	
23342.01SS	HVAC Power Ventilators Submittal 23_3423-01	14	12-Feb-10 A	23-Feb-10 A																	
23351.01SS	Dust Collection Equipment Submittal 23_3514-01	14	12-Feb-10 A	23-Feb-10 A																	
23553.01SS	Fuel-Fired Unit Heaters Submittal 23_5533-01NOT ACCEPTED	14	12-Feb-10 A	23-Feb-10 A																	

■ Actual Work ■ Critical Remaining Work
■ Remaining Work ◆ Milestone

Project Schedule

Activity ID	Description	Original Duration	Start	Finish	Qtr 1, 2010			Qtr 2, 2010			Qtr 3, 2010			Qtr 4, 2010			Qtr 1, 2011			Qtr 2, 2011	
					Jan	Feb	Mar	Apr	May	Jun	Jul	Aug	Sep	Oct	Nov	Dec	Jan	Feb	Mar	Apr	May
					23741.01SS	Packaged Roof Top Units Submittal 23 7413-01	14	12-Feb-10 A	18-Feb-10 A		█										
23761.01SS	Direct Evaporative Air Coolers Submittal 23_7613-01	14	12-Feb-10 A	23-Feb-10 A		█															
23812.01SS	Small Split-System Heating and Cooling Submittal 23_8127-01	14	12-Feb-10 A	23-Feb-10 A		█															
23370.01SS	Air Outlets and Inlets Submittal 23 3700-01NOT APPROVED	14	12-Feb-10 A	23-Feb-10 A		█															
26051.01SS	Low-Voltage Elect Power Conductors & Cables Submittal 26 ...	14	23-Feb-10 A	03-Mar-10 A			█														
26052.01SS	Grounding & Bonding for Elect Systems Submittal 26 0526-01	14	23-Feb-10 A	03-Mar-10 A			█														
26059.01SS	Hangers and Supports for Electrical Systems Submittal 26 05...	14	23-Feb-10 A	03-Mar-10 A			█														
26053.01SS	Conduit Submittal 26 0534-01	14	23-Feb-10 A	03-Mar-10 A			█														
07210.01SG	Thermal Insulation Submittal 07 2100-01 - Permieter Insulation	14	23-Feb-10 A	24-Feb-10 A			█														
10561.01SS	Storage Shelving Submittal 10 5613-01	14	23-Feb-10 A	12-Mar-10 A			█														
07720.01SS	Roof Accessories Submittal 07 7200-01	14	24-Feb-10 A	24-Feb-10 A			█														
10110.01SV	Visual Display Boards Submittal 10 1101-01	14	24-Feb-10 A	26-Feb-10 A			█														
10140.01SV	Signage Submittal 10 1400-01NOT ACCEPTED	14	24-Feb-10 A	03-Mar-10 A			█														
10260.01SV	Wall and Corner Guards Submittal 10 2601-01	7	24-Feb-10 A	09-Mar-10 A			█														
11520.01SV	Audio-Visual Equipment Submittal 11 5200-01	7	24-Feb-10 A	09-Mar-10 A			█														
12481.01SV	Entrance Mats and Frames Submittal 12 4813-01	7	24-Feb-10 A	24-Feb-10 A			█														
07411.01SS	Metal Roof Panels Submittal 07 4113-01	14	25-Feb-10 A	26-Feb-10 A			█														
07540.01SS	Thermoplastic Membrane Roofing Submittal 07 5400-01	14	25-Feb-10 A	26-Feb-10 A			█														
07620.01SS	Sheet Metal Flashing and Trim Submittal 07 6200-01 Not App...	14	25-Feb-10 A	26-Feb-10 A			█														
11400.01SS	Foodservice Equipment Submittal 11 4000-01	14	25-Feb-10 A	05-Mar-10 A			█														
08331.01SS	Coiling Counter Doors Submittal 08 3313-01Not ACCEPTED	14	01-Mar-10 A	08-Mar-10 A			█														
08332.01SS	Overhead Coiling Doors Submittal 08 3323-01NOT APPROVED	14	01-Mar-10 A	08-Mar-10 A			█														
05500.02SV	Metal Fabrications Re-Submittal 05 5000-02	2	01-Mar-10 A	03-Mar-10 A			█														
05521.02SV	Pipe and Tube Railings Re-Submittal 05 5213-02 Not Accepted	2	01-Mar-10 A	03-Mar-10 A			█														
11570.01SS	Vocational Shop Equipment Submittal 11 5700-01	14	02-Mar-10 A	08-Mar-10 A			█														
26272.01SS	Wiring Devices Submittal 26 2726-01	14	02-Mar-10 A	03-Mar-10 A			█														
08622.02SV	Tubular Skylights Re-Submittal 08 6223-02	14	03-Mar-10 A	08-Mar-10 A			█														
03351.01SG	High Tolerance Concrete Floor Finishing Submittal 03 3513-01	14	04-Mar-10 A	05-Mar-10 A			█														
03300.01SV	Cast in Place Concrete Submittal #03 3000-01	14	04-Mar-10 A	05-Mar-10 A			█														
26057.01SS	Boxes Submittal 26 0537-01	14	05-Mar-10 A	05-Mar-10 A			█														
09223.01SS	Metal Lath Submittal 09 2236.23-01	14	08-Mar-10 A	08-Mar-10 A			█														
09240.01SS	Portland Cement Plastering Submittal 09 2400-01NOT ACCE...	14	08-Mar-10 A	08-Mar-10 A			█														
07250.01SS	Weather Barrier Submittal 07 2500-01	14	08-Mar-10 A	08-Mar-10 A			█														
07210.02SS	Polyisocyanurate Board Insulation Submittal 07 2100.P02-01	14	08-Mar-10 A	08-Mar-10 A			█														
07210.04SS	Polyisocyanurate Board Insulation RE-Submittal 07 2100-02	14	08-Mar-10 A	08-Mar-10 A			█														
07210.03SS	Thermal Insulation (Batt Insulation) Submittal	14	09-Mar-10 A	10-Mar-10 A			█														
06410.01SS	Architectural Wood Casework Submittal 06_4100-01 NOT AC...	14	09-Mar-10 A	16-Mar-10 A			█														
09211.01SS	Gypsum Board Assemblies Submittal 09 2116-01	14	09-Mar-10 A	10-Mar-10 A			█														
09510.01SS	Acoustical Ceilings Submittal 09 5100-01	14	09-Mar-10 A	10-Mar-10 A			█														
22300.02SS	Plumbing Equipment Re-Submittal	14	10-Mar-10 A	15-Mar-10 A			█														
26092.01SS	Lighting Control Devices Submittal 26 0923-01	14	15-Mar-10 A	18-Mar-10 A			█														
26241.01SS	Panelboards Submittal 26 2416-01	14	15-Mar-10 A	18-Mar-10 A			█														
09300.01SS	Tiling Submittal 09_3000-01NOT APPROVED	14	16-Mar-10 A	22-Mar-10 A			█														
13341.01SV	Metal Building Systems Submittal 13_3419-01	7	16-Mar-10 A	17-Mar-10 A			█														
10280.01SV	Toilet, Bath and Laundry Accessories Submittal 10 2800-01N...	14	17-Mar-10 A	19-Mar-10 A			█														

█ Actual Work █ Critical Remaining Work
█ Remaining Work ◆ Milestone

Project Schedule

Activity ID	Description	Original Duration	Start	Finish	Qtr 1, 2010		Qtr 2, 2010			Qtr 3, 2010			Qtr 4, 2010			Qtr 1, 2011			Qtr 2, 2011		
					Jan	Feb	Mar	Apr	May	Jun	Jul	Aug	Sep	Oct	Nov	Dec	Jan	Feb	Mar	Apr	May
					10440.01SV	Fire Protection Specialties Submittal 10 4400-01NOT ACCEP...	14	17-Mar-10 A	19-Mar-10 A				■	■	■						
26281.01SS	Fuses Submittal 26 2813-01	14	17-Mar-10 A	18-Mar-10 A				■	■	■											
26288.01SS	Enclosed Switches Submittal 26 2818-01	14	17-Mar-10 A	18-Mar-10 A				■	■	■											
26511.01SS	Interior Lighting Luminaires, Lamps and Ballasts Submittal 26...	14	17-Mar-10 A	18-Mar-10 A				■	■	■											
27100.01SS	Structured Cabling for Voice and Data-Inside Plant Submittal ...	14	17-Mar-10 A	22-Mar-10 A				■	■	■											
27512.01SS	Intercom Systems Submittal 27_5124-01	14	17-Mar-10 A	23-Mar-10 A				■	■	■											
04273.01SS	Reinforced Unit Masonry Submittal 04 2731-01NOT APPROV...	14	18-Mar-10 A	31-Mar-10 A				■	■	■											
28310.01SS	Fire Detection and Alarm Submittal 28 3100-01	14	23-Mar-10 A	11-May-10 A				■	■	■											
05500.03SV	Metal Fabrications Re-Submittal 3 05 5000-03	14	23-Mar-10 A	23-Mar-10 A				■	■	■											
21130.01SS	Fire-Suppression Sprinkler Systems Submittal 21_1300-01	7	24-Mar-10 A	11-May-10 A				■	■	■											
09681.01SS	Tile Carpeting Submittal	14	25-Mar-10 A	29-Mar-10 A				■	■	■											
09840.01SS	Acoustical Room Components Submittal 09 8400-01	14	29-Mar-10 A	31-Mar-10 A				■	■	■											
10110.02SV	Visual Display Boards RE-Submittal	14	29-Mar-10 A	29-Mar-10 A				■	■	■											
08111.01SV	Hollow Metal Doors and Frames Submittal 08 1113-01NOT A...	14	31-Mar-10 A	22-Apr-10 A				■	■	■											
08710.01SV	Door Hardware Submittal	14	31-Mar-10 A	22-Apr-10 A				■	■	■											
10711.01SV	Sun Control Devices Submittal 10 7113-01 Not Accepted	14	31-Mar-10 A	23-Apr-10 A				■	■	■											
07250.02SS	Weather Barrier RE Submittal	14	01-Apr-10 A	05-Apr-10 A				■	■	■											
07250.04S	Weather Barrier 07 2500-02	14	01-Apr-10 A	05-Apr-10 A				■	■	■											
04273.02SS	Reinforced Unit Masonry RE-Submittal	14	01-Apr-10 A	21-May-10 A				■	■	■											
10280.02SV	Toilet, Bath and Laundry Accessories RE Submittal	14	07-Apr-10 A	07-Apr-10 A				■	■	■											
03300.03SG	Underslab Vapor Retarder# 03 3000-03	14	07-Apr-10 A	08-Apr-10 A				■	■	■											
10440.02SV	Fire Protection Specialties RE-Submittal	14	08-Apr-10 A	13-Apr-10 A				■	■	■											
10211.01SV	Plastic Toilet Compartments Submittal	14	08-Apr-10 A	10-May-10 A				■	■	■											
10140.02SV	Signage RE-Submittal	14	13-Apr-10 A	20-Apr-10 A				■	■	■											
07620.02SS	Sheet Metal Flashing and Trim RE-Submittal Not Accepted	14	15-Apr-10 A	22-Apr-10 A				■	■	■											
07620.03SS	Sheet Metal Flashing and Trim RE-re submittal 07 6200-03	14	15-Apr-10 A	22-Apr-10 A				■	■	■											
08332.02SS	Overhead Coiling Doors RE-Submittal 08 3323-02	14	16-Apr-10 A	26-Apr-10 A				■	■	■											
08331.02SS	Coiling Counter Doors RE Submittal	14	16-Apr-10 A	26-Apr-10 A				■	■	■											
10510.02SS	Lockers RE-Submittal	14	21-Apr-10 A	22-Apr-10 A				■	■	■											
09900.01SS	Painting and Coating Submittal	14	26-Apr-10 A	10-May-10 A				■	■	■											
26511.02SS	Interior Lighting Luminaires, Lamps and Ballasts RE-Submitta...	14	26-Apr-10 A	11-May-10 A				■	■	■											
26055.01SS	Identification for Electrical Systems Submittal	14	27-Apr-10 A	04-May-10 A				■	■	■											
08141.01SV	Flush Wood Doors Submittal 08 1416-01	14	28-Apr-10 A	03-May-10 A				■	■	■											
08111.02SV	Hollow Metal Doors and Frames RE Submittal 08 1113-02	14	29-Apr-10 A	04-May-10 A				■	■	■											
10260.02SV	Wall and Corner Guards RE-Submittal 10 2601-02	14	30-Apr-10 A	04-May-10 A				■	■	■											
23092.01SS	Direct-Digital Control System for HVAC Submittal	14	30-Apr-10 A	11-May-10 A				■	■	■											
23553.02SS	Fuel-Fired Unit Heaters RE-Submittal	14	30-Apr-10 A	10-May-10 A				■	■	■											
09240.02SS	Portland Cement Plastering Submittal 09 2400-02	14	03-May-10 A	04-May-10 A				■	■	■											
09650.01SS	Resilient Flooring Submittal	14	06-May-10 A	10-May-10 A				■	■	■											
08450.02SS	Translucent Wall and Roof Assemblies Submittal 08 4500-02	14	07-May-10 A	07-May-10 A				■	■	■											
03450.01SS	Precast Architectural Concrete Submittal	14	10-May-10 A	14-May-10 A				■	■	■											
11570.02SS	Vocational Shop Equipment RE Submittal 11 5700-02	14	12-May-10 A	12-May-10 A				■	■	■											
23370.02SS	Air Outlets and Inlets RE-Submittal	14	13-May-10 A	13-May-10 A				■	■	■											
07411.02SS	Metal Roof Panels RE-Submittal 07 4113-02	14	14-May-10 A	14-May-10 A				■	■	■											
06410.02SS	Architectural Wood Casework Re-Submittal 06 4100-02	14	20-May-10 A	25-May-10 A				■	■	■											

■ Actual Work ■ Critical Remaining Work
■ Remaining Work ◆ Milestone

Project Schedule

Activity ID	Description	Original Duration	Start	Finish	Qtr 1, 2010			Qtr 2, 2010			Qtr 3, 2010			Qtr 4, 2010			Qtr 1, 2011			Qtr 2, 2011		
					Jan	Feb	Mar	Apr	May	Jun	Jul	Aug	Sep	Oct	Nov	Dec	Jan	Feb	Mar	Apr	May	
10711.02SV	Sun Control Devices Submittal 10 7113-02	14	24-May-10 A	24-May-10 A																		
08332.03SS	Overhead Coiling Doors Re Submittal 08 3323-03	14	25-May-10 A	25-May-10 A																		
08431.02SS	Aluminum-Framed Storefronts Submittal 08_4313-02	14	27-May-10 A	27-May-10 A																		
22300.03SS10	Plumbing Equipment Re-Submittal	14	01-Jun-10 A	07-Jun-10 A																		
09300.02SS	Tiling RE-Submittal	14	14-Jun-10 A	22-Jun-10 A																		
11310.01SG	Residential Appliances Submittal NOT ALL ACCEPTED	14	22-Jun-10 A	22-Jun-10 A																		
11310.02SG	Residential Appliances Submittal	14	28-Jun-10 A	07-Jul-10 A																		
06820.01SG	Glass-Fiber Reinforced Plastic Panels Submittal	14	06-Jul-10 A	06-Jul-10 A																		
07900.01SV	Joint Sealers Submittal	14	27-Sep-10	10-Oct-10																		
08830.01SV	Mirrors Submittal	14	27-Sep-10	10-Oct-10																		
10221.01SV	Wire Mesh Partitions Submittal	14	27-Sep-10	10-Oct-10																		
10514.01SS	Wire Mesh Storage Lockers Submittal	14	27-Sep-10	10-Oct-10																		
23059.01SS	Testing, Adjusting and Balancing for HVAC Submittal	14	27-Sep-10	10-Oct-10																		
23080.01SS	Commissioning of HVAC Submittal	14	27-Sep-10	10-Oct-10																		
23310.01SS	HVAC Ducts and Casings Submittal	14	27-Sep-10	10-Oct-10																		
26431.01SS	Transient-Voltage Suppression for Low-Voltage Electrical Po...	14	27-Sep-10	10-Oct-10																		
32131.01SS	Concrete Paving Submittal	14	27-Sep-10	10-Oct-10																		
23342.02SS	HVAC Power Ventilators RE-Submittal	14	27-Sep-10	10-Oct-10																		
Approval																						
No Building																						
03200.01AA	Rebar Approval Building "A" - 03 2000-01	14	05-Feb-10 A	16-Feb-10 A																		
03200.02AA	Rebar Approval Building "G" 03 2000-02	14	05-Feb-10 A	16-Feb-10 A																		
05500.01AA	Metal Fabrications Approval 05 5500-01 NOT ACCEPTED	14	05-Feb-10 A	16-Feb-10 A																		
05521.01AA	Pipe and Tube Railings Approval 05 5213-01 NOT ACCEPTED	14	05-Feb-10 A	16-Feb-10 A																		
03200.04AA	Rebar Approval Sitework 03 2000-03	14	05-Feb-10 A	07-Apr-10 A																		
10510.01AA	Lockers Approval 10 5100-01NOT ACCEPTED	14	11-Feb-10 A	20-Apr-10 A																		
08622.01AA	Tubular Skylights Approval 08 6223-01 NOT ACCEPTED	14	15-Feb-10 A	03-Mar-10 A																		
22100.01AA	Plumbing Piping Approval 22 1005-01	14	18-Feb-10 A	19-Feb-10 A																		
22300.01AA	Plumbing Equipment Approval 22 3000-01NOT ACCEPTED	14	18-Feb-10 A	22-Feb-10 A																		
23071.01AA	Duct Insulation Approval 23 0713-01	14	18-Feb-10 A	22-Feb-10 A																		
22071.01AA	Plumbing Piping Insulation Approval 22 0719-01	14	19-Feb-10 A	03-Mar-10 A																		
22106.01AA	Plumbing Piping Specialties Approval 22 1006-01	14	19-Feb-10 A	04-Mar-10 A																		
23741.01AA	Packaged Roof Top Units Approval 23 7413-01	14	19-Feb-10 A	22-Feb-10 A																		
22400.01AA	Plumbing Fixtures Approval 22 4000-01	14	19-Feb-10 A	22-Feb-10 A																		
23330.01AA	Air Duct Accessories Approval 23_3300-01	14	22-Feb-10 A	23-Feb-10 A																		
03200.03AA	Rebar Approval Building "C" 03 2000-04	14	23-Feb-10 A	08-Mar-10 A																		
23370.01AA	Air Outlets and Inlets Approval 23 3700-01not approved	14	23-Feb-10 A	04-Mar-10 A																		
23211.01AA	Hydronic Piping Approval 23_2113-01	14	23-Feb-10 A	24-Feb-10 A																		
23342.01AA	HVAC Power Ventilators Approval 23_3423-01 Not Approved	14	23-Feb-10 A	16-Mar-10 A																		
23351.01AA	Dust Collection Equipment Approval 23_3514-01	14	23-Feb-10 A	24-Feb-10 A																		
23553.01AA	Fuel-Fired Unit Heaters Approval 23_5533-01NOT ACCEPTED	14	23-Feb-10 A	12-Apr-10 A																		
23761.01AA	Direct Evaporative Air Coolers Approval 23_7613-01	14	23-Feb-10 A	24-Feb-10 A																		
23812.01AA	Small Split-System Heating and Cooling Approval 23_8127-01	14	23-Feb-10 A	24-Feb-10 A																		
07720.01AA	Roof Accessories Approval 07 7200-01	14	24-Feb-10 A	11-Mar-10 A																		

■ Actual Work ■ Critical Remaining Work
■ Remaining Work ◆ Milestone

Tatsch Construction, Inc.

Texico Municipal Schools - Additions and Renovations

Data Date: 27-Sep-10 Revised:27-Sep-10 12:11

208 Highway 180 West, Silver City, NM 88061

Project Schedule

Activity ID	Description	Original Duration	Start	Finish	Qtr 1, 2010		Qtr 2, 2010			Qtr 3, 2010			Qtr 4, 2010			Qtr 1, 2011			Qtr 2, 2011		
					Jan	Feb	Mar	Apr	May	Jun	Jul	Aug	Sep	Oct	Nov	Dec	Jan	Feb	Mar	Apr	May
					08431.01AA	Aluminum-Framed Storefronts Approval 08_4313-01NOT AC...	14	24-Feb-10 A	06-Apr-10 A												
08800.01AA	Glazing Approval 08_8000-01	14	24-Feb-10 A	01-Apr-10 A																	
12481.01AA	Entrance Floor Mats and Frames Approval 12 4813-01	14	24-Feb-10 A	17-Mar-10 A																	
07210.01AA	Thermal Insulation Approval 07 2100-01 - Perimeter Insulation	14	24-Feb-10 A	11-Mar-10 A																	
05120.01AA	Structural Steel Approval 05 1200-01	14	26-Feb-10 A	26-Mar-10 A																	
05210.01AA	Steel Joist Approval 05 2100-01	14	26-Feb-10 A	18-Mar-10 A																	
05300.01AA	Metal Decking Approval 05 3000-01	14	26-Feb-10 A	18-Mar-10 A																	
07411.01AA	Metal Roof Panels Approval 07 4113-01NOT ACCEPTED	14	26-Feb-10 A	30-Apr-10 A																	
07540.01AA	Thermoplastic Membrane Roofing Approval 07 5400-01	14	26-Feb-10 A	29-Apr-10 A																	
07620.01AA	Sheet Metal Flashing and Trim Approval 07 6200-01NOT AP...	14	26-Feb-10 A	11-Mar-10 A																	
10110.01AA	Visual Display Boards Approval Not Approved Samples Requi...	14	26-Feb-10 A	25-Mar-10 A																	
10140.01AA	Signage Approval 10 1400-01NOT ACCEPTED	14	03-Mar-10 A	12-Apr-10 A																	
26051.01AA	Low-Voltage Elect Power Conductors & Cables Approval 26 0...	14	03-Mar-10 A	11-Mar-10 A																	
26052.01AA	Grounding & Bonding for Elect Systems Approval 26 0526-01	14	03-Mar-10 A	11-Mar-10 A																	
26059.01AA	Hangers and Supports for Electrical Systems Approval 26 05...	14	03-Mar-10 A	11-Mar-10 A																	
26053.01AA	Conduit Approval 26 0534-01	14	03-Mar-10 A	11-Mar-10 A																	
26272.01AA	Wiring Devices Approval 26 2726-01	14	03-Mar-10 A	11-Mar-10 A																	
05500.02AA	Metal Fabrications Approval 05 5000-02 NOT ACCEPTED	14	03-Mar-10 A	24-Mar-10 A																	
05521.02AA	Pipe and Tube Railings Approval 05 5213-02	14	03-Mar-10 A	19-Mar-10 A																	
26057.01AA	Boxes Approval 26 0537-01	14	05-Mar-10 A	16-Mar-10 A																	
03351.01AA	High Tolerance Concrete Floor Finishing Approval 03 3513-01	14	05-Mar-10 A	26-Mar-10 A																	
03300.01AA	Cast in Place Concrete Approval #03 3000-01	14	05-Mar-10 A	24-Mar-10 A																	
08622.02AA	Tubular Skylights Approval 08 6223-02	14	08-Mar-10 A	23-Apr-10 A																	
08331.01AA	Coiling Counter Doors Approval 08 3313-01NOT APPROVED	14	08-Mar-10 A	31-Mar-10 A																	
08332.01AA	Overhead Coiling Doors Approval 08 3323-01 NOT APPROVED	14	08-Mar-10 A	05-Apr-10 A																	
09223.01AA	Metal Lath Approval 09 2236.23-01	14	08-Mar-10 A	01-Apr-10 A																	
09240.01AA	Portland Cement Plastering Approval 09 2400-01NOT ACCE...	14	08-Mar-10 A	07-Apr-10 A																	
11400.01AA	Foodservice Equipment Approval 11 4000-01	14	08-Mar-10 A	30-Mar-10 A																	
11570.01AA	Vocational Shop Equipment Approval 11 5700-01NOT APPR...	14	08-Mar-10 A	11-May-10 A																	
07250.01AA	Weather Barrier Approval 07 2500-01NOT APPROVED	14	08-Mar-10 A	01-Apr-10 A																	
07210.02AA	Polyisocyanurate Board Insulation Approval 07 2100.P02-01 ...	14	08-Mar-10 A	05-Apr-10 A																	
10260.01AA	Wall and Corner Guards Approval 10 2601-01NOT ACCEPTED	14	09-Mar-10 A	07-Apr-10 A																	
11520.01AA	Audio-Visual Equipment Approval 11 5200-01	14	09-Mar-10 A	05-Apr-10 A																	
09211.01AA	Gypsum Board Assemblies Approval 09 2116-01	14	10-Mar-10 A	05-May-10 A																	
09510.01AA	Acoustical Ceilings Approval 09 5100-01	14	10-Mar-10 A	04-May-10 A																	
07210.03AA	Thermal Insulation (Batt Insulation) Approval 07 2100-03	14	10-Mar-10 A	16-Jun-10 A																	
08450.01AA	Translucent Wall and Roof Assemblies Approval 08 4500-01...	14	11-Mar-10 A	29-Apr-10 A																	
10561.01AA	Storage Shelving Approval 10 5613-01	14	12-Mar-10 A	18-Jun-10 A																	
22300.02AA	Plumbing Equipment Approval 22 3000-02 NOT APPROVED	14	15-Mar-10 A	29-Mar-10 A																	
06410.01AA	Architectural Wood Casework Approval 06_4100-01NOT AC...	14	16-Mar-10 A	13-May-10 A																	
13341.01AA	Metal Building Systems Approval 13_3419-01	14	17-Mar-10 A	27-Apr-10 A																	
26092.01AA	Lighting Control Devices Approval 26 0923-01	14	18-Mar-10 A	27-Sep-10																	
26241.01AA	Panelboards Approval 26 2416-01	14	18-Mar-10 A	01-Apr-10 A																	
26281.01AA	Fuses Approval 26 2813-01	14	18-Mar-10 A	01-Apr-10 A																	

■ Actual Work ■ Critical Remaining Work
■ Remaining Work ◆ Milestone

Project Schedule

Activity ID	Description	Original Duration	Start	Finish	Qtr 1, 2010			Qtr 2, 2010			Qtr 3, 2010			Qtr 4, 2010			Qtr 1, 2011			Qtr 2, 2011			
					Jan	Feb	Mar	Apr	May	Jun	Jul	Aug	Sep	Oct	Nov	Dec	Jan	Feb	Mar	Apr	May		
					04273.02AA	Reinforced Unit Masonry Approval	14	21-May-10 A	21-Jul-10 A														
10711.02AA	Sun Control Devices Approval 10 7113-02	14	24-May-10 A	27-May-10 A																			
08332.03AA	Overhead Coiling Doors Approval 08 3323-03	14	25-May-10 A	16-Jun-10 A																			
06410.02AA	Architectural Wood Casework Approval 06 4100-02	14	25-May-10 A	11-Jun-10 A																			
08431.02AA	Aluminum-Framed Storefronts Approval 08_4313-02	14	28-May-10 A	28-Jun-10 A																			
07620.03AA	Sheet Metal Flashing and Trim Approval 07 6200-03	14	04-Jun-10 A	22-Jun-10 A																			
22300.03AA	Plumbing Equipment Approval	14	07-Jun-10 A	21-Jun-10 A																			
11310.01AA	Residential Appliances Approval NOT ALL ACCEPTED	14	22-Jun-10 A	28-Jun-10 A																			
09300.02AA	Tiling Approval	14	22-Jun-10 A	23-Jun-10 A																			
06820.01AA	Glass-Reinforced Plastic Panels Approval	14	07-Jul-10 A	15-Jul-10 A																			
11310.02AA	Residential Appliances Approval	14	07-Jul-10 A	13-Jul-10 A																			
07900.01AA	Joint Sealers Approval	14	11-Oct-10	24-Oct-10																			
08830.01AA	Mirrors Approval	14	11-Oct-10	24-Oct-10																			
10514.01AA	Wire Mesh Storage Lockers Approval	14	11-Oct-10	24-Oct-10																			
23059.01AA	Testing, Adjusting and Balancing for HVAC Approval	14	11-Oct-10	24-Oct-10																			
23080.01AA	Commissioning of HVAC Approval	14	11-Oct-10	24-Oct-10																			
23310.01AA	HVAC Ducts and Casings Approval	14	11-Oct-10	24-Oct-10																			
26431.01AA	Transient-Voltage Suppression for Low-Voltage Electrical Po...	14	11-Oct-10	24-Oct-10																			
32131.01AA	Concrete Paving Approval	14	11-Oct-10	24-Oct-10																			
10221.01AA	Wire Mesh Partitions Approval	14	11-Oct-10	24-Oct-10																			
23342.02AA	HVAC Power Ventilators Approval	14	11-Oct-10	24-Oct-10																			
Miscellaneous																							
No Building																							
WD001.00MA	Weather Day - Snow	1	23-Feb-10 A	23-Feb-10 A																			
WD002.00MA	Weather Day - Snow	1	01-Mar-10 A	01-Mar-10 A																			
Delivery																							
No Building																							
03200.AGDV	Rebar Delivery A, G ONLY	1	08-Mar-10 A	08-Mar-10 A																			
12481.01DV	Entrance Floor Mats and Frames Delivery	1	22-Mar-10 A	22-Mar-10 A																			
07720.01DV	Bldg A - Roof Hatch Delivery	1	13-Apr-10 A	13-Apr-10 A																			
10110.01DV	Visual Display Boards Delivery	1	29-Apr-10 A	22-Jun-10 A																			
08622.01DV	Tubular Skylights Delivery	1	06-May-10 A	06-May-10 A																			
05210.01DV	Steel Joist Delivery	1	17-May-10 A	17-May-10 A																			
05300.01DV	Metal Decking Delivery	1	17-May-10 A	17-May-10 A																			
05120.00DV	Structural Steel Delivery	1	25-May-10 A	25-May-10 A																			
10440.00DV	Fire Protection Specialty Delivery	1	22-Jun-10 A	22-Jun-10 A																			
11520.01DV	Audio-Visual Equipment Delivery	1	22-Jun-10 A	22-Jun-10 A																			
08111.01DV	Hollow Metal Doors and Frames Delivery	1	30-Jun-10 A	30-Jun-10 A																			
13341.01DV	Metal Building Systems Delivery	1	01-Jul-10 A	12-Jul-10 A																			
05521.01DV	Pipe and Tube Railings Delivery	1	06-Jul-10 A	06-Jul-10 A																			
05500.01DV	Metal Fabrications Delivery	1	06-Jul-10 A	06-Jul-10 A																			
10280.01DV	Toilet, Bath and Laundry Accessories Delivery	1	08-Jul-10 A	08-Jul-10 A																			
10211.01DV	Plastic Toilet Compartments Delivery	1	12-Jul-10 A	12-Jul-10 A																			
10140.01DV	Signage Delivery	1	29-Jul-10 A	29-Jul-10 A																			

■ Actual Work ■ Critical Remaining Work
■ Remaining Work ◆ Milestone

Project Schedule

Activity ID	Description	Original Duration	Start	Finish	Qtr 1, 2010			Qtr 2, 2010			Qtr 3, 2010			Qtr 4, 2010			Qtr 1, 2011			Qtr 2, 2011			
					Jan	Feb	Mar	Apr	May	Jun	Jul	Aug	Sep	Oct	Nov	Dec	Jan	Feb	Mar	Apr	May		
					10510.01DS	Lockers Delivery	1	05-Aug-10 A	05-Aug-10 A														
10260.01DV	Wall and Corner Guards Delivery	1	09-Aug-10 A	09-Aug-10 A																			
08710.01DV	Door Hardware Delivery	1	23-Aug-10 A	23-Aug-10 A																			
10711.01DV	Sun Control Devices Delivery	1	23-Aug-10 A	23-Aug-10 A																			
11310.01DV	Residential Appliances Delivery	1	25-Aug-10 A	30-Aug-10 A																			
08141.01DV	Flush Wood Doors Delivery	1	31-Aug-10 A	31-Aug-10 A																			
11400.01DS	Foodservice Equipment Delivery	1	20-Sep-10 A	20-Sep-10 A																			
08331.01DV	Coiling Counter Doors Delivery	1	22-Sep-10 A	22-Sep-10 A																			
08332.01DS	Overhead Coiling Doors Delivery	1	22-Sep-10 A	22-Sep-10 A																			
11570.01DS	Vocational Shop Equipment Delivery	1	27-Sep-10	27-Sep-10																			
03200.S0DV	Rebar Delivery Site Only	1	18-Oct-10*	18-Oct-10																			
03200.C0DV	Rebar Delivery C	1	01-Nov-10	02-Nov-10																			
10514.01DS	Wire Mesh Storage Lockers Delivery	1	15-Nov-10	15-Nov-10																			
10221.01DV	Wire Mesh Partitions Delivery	1	29-Nov-10	29-Nov-10																			
Field Installation																							
Building A - Cafeteria / Kitchen / Pre-K																							
01100.00IG	Mobilization	12	08-Feb-10 A	12-Apr-10 A																			
31100.AGIS	Bldg A - Site Demo, Excavation & Backfill	12	15-Feb-10 A	05-Mar-10 A																			
03200.A0IG	Bldg A - Foundations	12	08-Mar-10 A	15-Apr-10 A																			
33050.AGIS	Bldg A & G - Site Utilities	12	14-Mar-10 A	30-Sep-10																			
22100.A0IS	Bldg A - Below Slab Plumbing Rough-In Kitchen	8	19-Apr-10 A	12-May-10 A																			
22100.A1IS	Bldg A - Below Slab Plumbing Rough-In (not kitchen)	8	19-Apr-10 A	12-May-10 A																			
26051.A0IS	Bldg A - Below Slab Electrical Rough-in	5	28-Apr-10 A	06-May-10 A																			
03201.A0IG	Bldg A - Slab	6	04-May-10 A	24-May-10 A																			
05120.A0IG	Bldg A - Structural Steel Erection	5	26-May-10 A	02-Jun-10 A																			
05400.A0IS	Bldg A - Exterior Stud Framing	10	26-May-10 A	15-Jul-10 A																			
05210.A0IG	Bldg A - Joist & Deck Installation	6	14-Jun-10 A	22-Jul-10 A																			
06102.A0IS	Bldg A - Roof Wood	7	06-Jul-10 A	22-Jul-10 A																			
09210.A0IS	Bldg A - Interior Framing	7	08-Jul-10 A	19-Aug-10 A																			
08111.A0IG	Bldg A - Hollow Metal Frame Installation	3	13-Jul-10 A	05-Aug-10 A																			
06101.A0IS	Bldg A - Exterior Sheathing	5	19-Jul-10 A	05-Aug-10 A																			
07540.A0IS	Bldg A - Roofing, Soffit Metal	11	19-Jul-10 A	05-Oct-10																			
22101.A0IS	Bldg A - Above Slab Plumbing Piping	12	19-Jul-10 A	16-Sep-10 A																			
23310.A0IS	Bldg A - HVAC Rough-In	12	19-Jul-10 A	19-Aug-10 A																			
06100.A0IG	Bldg A - Interior Rough Carpentry	7	20-Jul-10 A	27-Jul-10 A																			
07250.00IG	Bldg A - Weather Barriers	8	05-Aug-10 A	26-Aug-10 A																			
21130.A0IS	Bldg A - Fire Protection Rough In	4	05-Aug-10 A	12-Aug-10 A																			
26050.A0IS	Bldg A - Above Slab Electrical Rough-in	12	12-Aug-10 A	24-Aug-10 A																			
09211.A0IS	Bldg A - Interior Wallboard	16	23-Aug-10 A	06-Oct-10																			
09240.A0IS	Bldg A - Stucco	20	23-Aug-10 A	30-Sep-10																			
04273.A0IS	Bldg A - Masonry	20	23-Aug-10 A	12-Oct-10																			
07210.A0IS	Bldg A - Batt Insulation	9	23-Aug-10 A	21-Sep-10 A																			
07540.A1IS	Bldg A - Flashings	14	14-Sep-10 A	26-Oct-10																			
22102.A0IS	Bldg A - Roof Gas & Condensate Drain Piping	8	20-Sep-10 A	28-Sep-10																			

■ Actual Work ■ Critical Remaining Work
■ Remaining Work ◆ Milestone

Tatsch Construction, Inc.

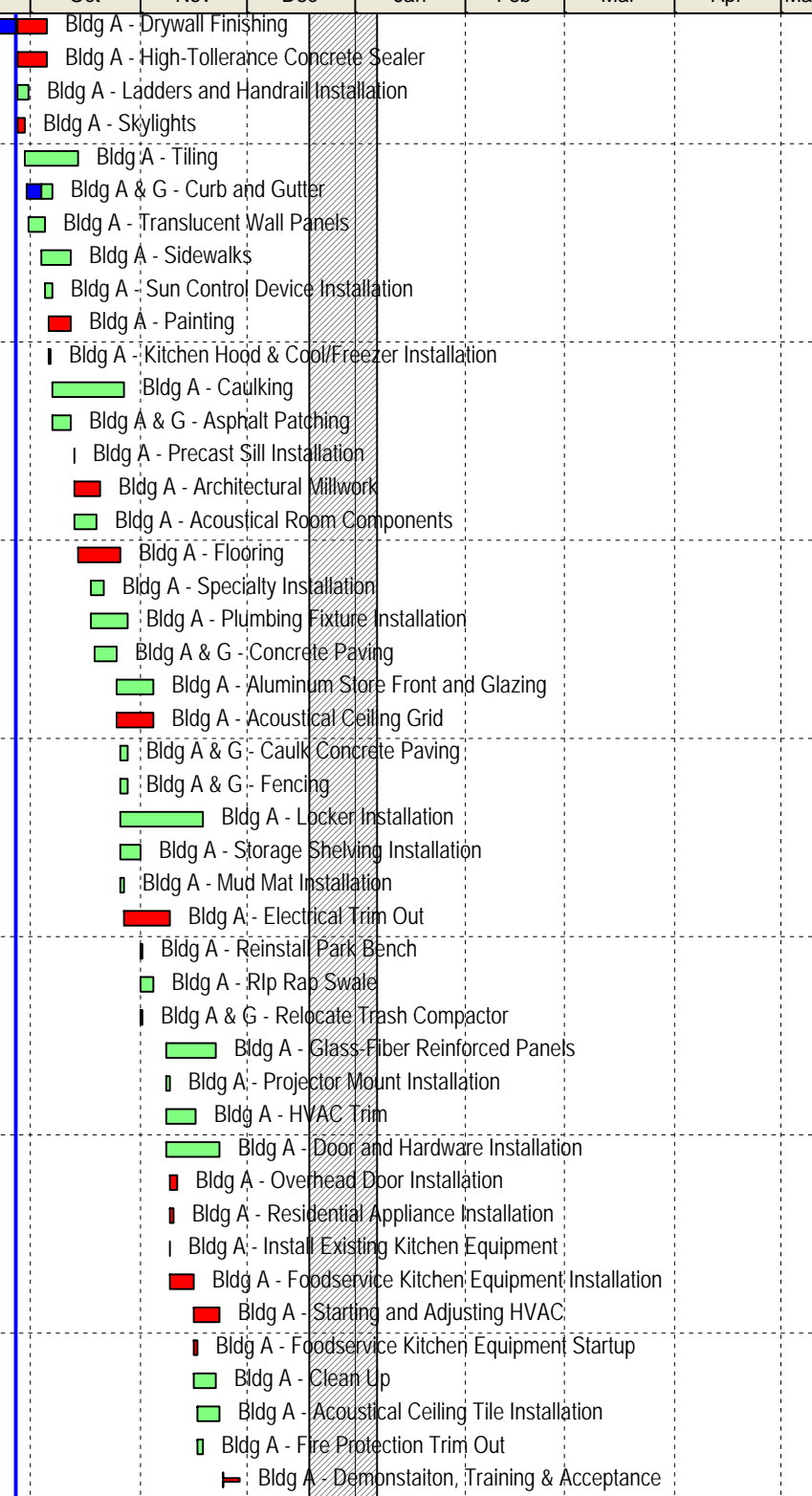
Texico Municipal Schools - Additions and Renovations

Data Date: 27-Sep-10 Revised:27-Sep-10 12:11

208 Highway 180 West, Silver City, NM 88061

Project Schedule

Activity ID	Description	Original Duration	Start	Finish	Qtr 1, 2010			Qtr 2, 2010			Qtr 3, 2010			Qtr 4, 2010			Qtr 1, 2011			Qtr 2, 2011		
					Jan	Feb	Mar	Apr	May	Jun	Jul	Aug	Sep	Oct	Nov	Dec	Jan	Feb	Mar	Apr	May	
09212.A0IS	Bldg A - Drywall Finishing	16	21-Sep-10 A	05-Oct-10																		
03351.A0IG	Bldg A - High-Tolerance Concrete Sealer	6	27-Sep-10	05-Oct-10																		
05500.A0IG	Bldg A - Ladders and Handrail Installation	4	27-Sep-10	30-Sep-10																		
08622.A0IG	Bldg A - Skylights	2	27-Sep-10	29-Sep-10																		
09300.A0IS	Bldg A - Tiling	10	29-Sep-10	14-Oct-10																		
32161.AGIG	Bldg A & G - Curb and Gutter	3	30-Sep-10 A	07-Oct-10																		
08450.A0IS	Bldg A - Translucent Wall Panels	2	30-Sep-10	05-Oct-10																		
32141.A0IG	Bldg A - Sidewalks	6	04-Oct-10	12-Oct-10																		
10711.A0IG	Bldg A - Sun Control Device Installation	2	05-Oct-10	07-Oct-10																		
09900.A0IS	Bldg A - Painting	8	06-Oct-10	12-Oct-10																		
11400.A0IS	Bldg A - Kitchen Hood & Cool/Freezer Installation	1	06-Oct-10	06-Oct-10																		
07900.A0IG	Bldg A - Caulking	11	07-Oct-10	27-Oct-10																		
32121.AGIG	Bldg A & G - Asphalt Patching	2	07-Oct-10	12-Oct-10																		
03450.A0IS	Bldg A - Precast Sill Installation	1	13-Oct-10	13-Oct-10																		
06410.A0IS	Bldg A - Architectural Millwork	5	13-Oct-10	20-Oct-10																		
09840.A0IG	Bldg A - Acoustical Room Components	4	13-Oct-10	19-Oct-10																		
09650.A0IS	Bldg A - Flooring	6	14-Oct-10	26-Oct-10																		
10280.A0IG	Bldg A - Specialty Installation	4	18-Oct-10	21-Oct-10																		
22400.A0IS	Bldg A - Plumbing Fixture Installation	8	18-Oct-10	28-Oct-10																		
32131.AGIG	Bldg A & G - Concrete Paving	4	19-Oct-10	25-Oct-10																		
08431.A0IS	Bldg A - Aluminum Store Front and Glazing	8	25-Oct-10	04-Nov-10																		
09510.A0IS	Bldg A - Acoustical Ceiling Grid	8	25-Oct-10	04-Nov-10																		
07931.AGIG	Bldg A & G - Caulk Concrete Paving	3	26-Oct-10	28-Oct-10																		
32000.AGIS	Bldg A & G - Fencing	3	26-Oct-10	28-Oct-10																		
10510.A0IS	Bldg A - Locker Installation	14	26-Oct-10	18-Nov-10																		
10561.A0IS	Bldg A - Storage Shelving Installation	2	26-Oct-10	01-Nov-10																		
12481.A0IG	Bldg A - Mud Mat Installation	1	26-Oct-10	27-Oct-10																		
26050.A1IS	Bldg A - Electrical Trim Out	8	27-Oct-10	09-Nov-10																		
32900.AGIG	Bldg A - Reinstall Park Bench	1	01-Nov-10	01-Nov-10																		
32901.A0IG	Bldg A - Rip Rap Swale	4	01-Nov-10	04-Nov-10																		
32901.AGIG	Bldg A & G - Relocate Trash Compactor	1	01-Nov-10	01-Nov-10																		
06820.A0IG	Bldg A - Glass-Fiber Reinforced Panels	9	08-Nov-10	22-Nov-10																		
11520.A0IG	Bldg A - Projector Mount Installation	2	08-Nov-10	09-Nov-10																		
23310.A1IS	Bldg A - HVAC Trim	6	08-Nov-10	16-Nov-10																		
08141.A0IG	Bldg A - Door and Hardware Installation	9	08-Nov-10	23-Nov-10																		
08331.A0IS	Bldg A - Overhead Door Installation	2	09-Nov-10	11-Nov-10																		
11310.A0IG	Bldg A - Residential Appliance Installation	2	09-Nov-10	10-Nov-10																		
11400.A0IG	Bldg A - Install Existing Kitchen Equipment	1	09-Nov-10	09-Nov-10																		
11400.A1IS	Bldg A - Foodservice Kitchen Equipment Installation	4	09-Nov-10	16-Nov-10																		
01750.A0IG	Bldg A - Starting and Adjusting HVAC	4	16-Nov-10	23-Nov-10																		
11400.A2SS	Bldg A - Foodservice Kitchen Equipment Startup	1	16-Nov-10	17-Nov-10																		
01700.A0IG	Bldg A - Clean Up	3	16-Nov-10	22-Nov-10																		
09510.A1IS	Bldg A - Acoustical Ceiling Tile Installation	4	17-Nov-10	23-Nov-10																		
21130.A1IS	Bldg A - Fire Protection Trim Out	2	17-Nov-10	18-Nov-10																		
01790.A0IG	Bldg A - Demonstaiton, Training & Acceptance	2	23-Nov-10	29-Nov-10																		



Project Schedule

Activity ID	Description	Original Duration	Start	Finish	Qtr 1, 2010			Qtr 2, 2010			Qtr 3, 2010			Qtr 4, 2010			Qtr 1, 2011			Qtr 2, 2011	
					Jan	Feb	Mar	Apr	May	Jun	Jul	Aug	Sep	Oct	Nov	Dec	Jan	Feb	Mar	Apr	May
11400.A3ST	Bldg A - Foodservice Kitchen Equipment Owner Training	1	24-Nov-10	29-Nov-10																	
01000.A0IG	Bldg A - Owner Moves from Bldg C to Bldg A	4	29-Nov-10	06-Dec-10																	
10221.A0IG	Bldg A - Wire Mesh Partition Installation	1	30-Nov-10	30-Nov-10																	
Building B - Junior High																					
02410.B00G	Bldg B - Demolition - West Restrooms Only	2	19-Apr-10 A	27-Apr-10 A																	
22100.B0IS	Bldg B - Below Slab Plumbing Rough-In	6	10-May-10 A	08-Jun-10 A																	
02410.B0IG	Bldg B - Demolition	6	18-May-10 A	09-Jun-10 A																	
09000.B01G	Bldg B - Slab Patching	3	27-May-10 A	22-Jun-10 A																	
09210.B0IS	Bldg B - Interior Framing	2	03-Jun-10 A	08-Jul-10 A																	
06100.B0IG	Bldg B - Interior Rough Carpentry	3	07-Jun-10 A	12-Jul-10 A																	
22101.B0IS	Bldg B - Above Slab Plumbing Piping	8	15-Jun-10 A	08-Jul-10 A																	
26050.B0IS	Bldg B - Electrical Rough-in	4	15-Jun-10 A	24-Jun-10 A																	
23310.B0IS	Bldg B - HVAC Rough-In	3	17-Jun-10 A	08-Jul-10 A																	
07210.B0IS	Bldg B - Batt Insulation	1	12-Jul-10 A	13-Jul-10 A																	
09211.B0IS	Bldg B - Interior Wallboard	2	14-Jul-10 A	20-Jul-10 A																	
09212.B0IS	Bldg B - Drywall Finishing	6	19-Jul-10 A	22-Jul-10 A																	
09650.B0IS	Bldg B - Flooring	4	21-Jul-10 A	18-Aug-10 A																	
08111.B0IG	Bldg B - Hollow Metal Frame Installation	1	22-Jul-10 A	22-Jul-10 A																	
04273.B0IS	Bldg B - Masonry	2	22-Jul-10 A	27-Jul-10 A																	
09300.B0IS	Bldg B - Tiling	4	22-Jul-10 A	25-Jul-10 A																	
09900.B0IS	Bldg B - Painting	2	26-Jul-10 A	19-Aug-10 A																	
22400.B0IS	Bldg B - Plumbing Fixture Installation	4	02-Aug-10 A	05-Aug-10 A																	
10280.B0IG	Bldg B - Specialty Installation	3	03-Aug-10 A	05-Aug-10 A																	
08141.B0IG	Bldg B - Door and Hardware Installation	2	09-Aug-10 A	12-Aug-10 A																	
09510.B0IS	Bldg B - Acoustical Ceiling Grid	2	09-Aug-10 A	10-Aug-10 A																	
23310.B1IS	Bldg B - HVAC Trim	2	09-Aug-10 A	18-Aug-10 A																	
09510.B1IS	Bldg B - Acoustical Ceiling Tile Installation	2	10-Aug-10 A	11-Aug-10 A																	
26050.B1IS	Bldg B - Electrical Trim out	4	16-Aug-10 A	19-Aug-10 A																	
06410.B0IS	Bldg B - Architectural Millwork	6	18-Aug-10 A	23-Aug-10 A																	
01700.B0IG	Bldg B - Clean Up	5	23-Aug-10 A	27-Sep-10																	
07900.B0IG	Bldg B - Caulking	1	23-Aug-10 A	23-Aug-10 A																	
11310.B0IG	Bldg B - Residential Appliance Installation	1	24-Aug-10 A	24-Aug-10 A																	
10561.B0IS	Bldg B - Storage Shelving Installation	1	17-Sep-10 A	18-Sep-10 A																	
06820.B0IG	Bldg B - Glass-Fiber Reinforced Panels	1	27-Sep-10	27-Sep-10																	
01790.B0IG	Bldg B - Demonstaiton, Training & Acceptance	2	28-Sep-10	29-Sep-10*																	
Building C - Existing Cafeteria - Future Career Ctr																					
01100.C0IG	Bldg C - Temporary Fencing	2	06-Dec-10	07-Dec-10																	
02410.C0IG	Bldg C - Demolition Building Interior	14	07-Dec-10	30-Dec-10																	
31100.C0IS	Bldg C - Sie Demo, Excavation & Backfill	10	07-Dec-10	23-Dec-10																	
03200.C0IG	Bldg C - Foundations	6	23-Dec-10	04-Jan-11																	
22100.C0IS	Bldg C - Below Slab Plumbing Rough-In	8	30-Dec-10	13-Jan-11																	
05120.C0IG	Bldg C - Structural Steel Erection	2	04-Jan-11	06-Jan-11																	
05210.C0IG	Bldg C - Joist & Deck Installation	2	06-Jan-11	12-Jan-11																	
03201.C0IG	Bldg C - Slab	2	13-Jan-11	19-Jan-11																	

■ Actual Work ■ Critical Remaining Work
■ Remaining Work ◆ Milestone

Tatsch Construction, Inc.

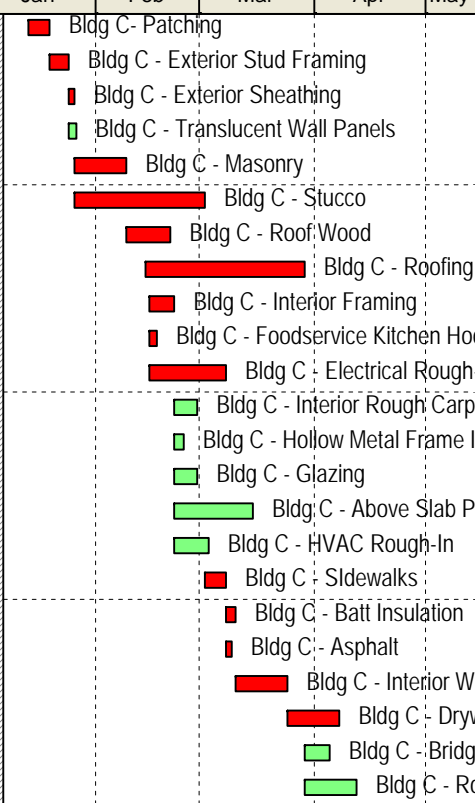
Texico Municipal Schools - Additions and Renovations

Data Date: 27-Sep-10 Revised:27-Sep-10 12:11

208 Highway 180 West, Silver City, NM 88061

Project Schedule

Activity ID	Description	Original Duration	Start	Finish	Qtr 1, 2010			Qtr 2, 2010			Qtr 3, 2010			Qtr 4, 2010			Qtr 1, 2011			Qtr 2, 2011	
					Jan	Feb	Mar	Apr	May	Jun	Jul	Aug	Sep	Oct	Nov	Dec	Jan	Feb	Mar	Apr	May
					09000.C01G	Bldg C - Patching	3	13-Jan-11	19-Jan-11												
05400.C0IS	Bldg C - Exterior Stud Framing	2	19-Jan-11	24-Jan-11																	
06101.C0IS	Bldg C - Exterior Sheathing	2	24-Jan-11	26-Jan-11																	
08450.C0IS	Bldg C - Translucent Wall Panels	2	24-Jan-11	26-Jan-11																	
04273.C0IS	Bldg C - Masonry	8	26-Jan-11	09-Feb-11																	
09240.C0IS	Bldg C - Stucco	20	26-Jan-11	02-Mar-11																	
06102.C0IS	Bldg C - Roof Wood	6	09-Feb-11	21-Feb-11																	
07540.C0IS	Bldg C - Roofing, Soffit Metal and Flashings	25	14-Feb-11	29-Mar-11																	
09210.C0IS	Bldg C - Interior Framing	4	15-Feb-11	22-Feb-11																	
11400.C0IS	Bldg C - Foodservice Kitchen Hood	2	15-Feb-11	17-Feb-11																	
26050.C0IS	Bldg C - Electrical Rough-in	12	15-Feb-11	08-Mar-11																	
06100.C0IG	Bldg C - Interior Rough Carpentry	3	22-Feb-11	28-Feb-11																	
08111.C0IG	Bldg C - Hollow Metal Frame Installation	2	22-Feb-11	24-Feb-11																	
08800.C0IS	Bldg C - Glazing	3	22-Feb-11	28-Feb-11																	
22101.C0IS	Bldg C - Above Slab Plumbing Piping	12	22-Feb-11	15-Mar-11																	
23310.C0IS	Bldg C - HVAC Rough-In	6	22-Feb-11	03-Mar-11																	
32141.C0IG	Bldg C - Sidewalks	3	02-Mar-11	08-Mar-11																	
07210.C0IS	Bldg C - Batt Insulation	2	08-Mar-11	10-Mar-11																	
32121.C0IG	Bldg C - Asphalt	2	08-Mar-11	09-Mar-11																	
09211.C0IS	Bldg C - Interior Wallboard	8	10-Mar-11	24-Mar-11																	
09212.C0IS	Bldg C - Drywall Finishing	8	24-Mar-11	07-Apr-11																	
11570.C0IS	Bldg C - Bridge Crane Installation	4	29-Mar-11	05-Apr-11																	
22102.C0IS	Bldg C - Roof Gas & Condensate Drain Piping	8	29-Mar-11	12-Apr-11																	
09900.C0IS	Bldg C - Painting	8	07-Apr-11	21-Apr-11																	
06410.C0IS	Bldg C - Architectural Millwork	5	21-Apr-11	26-Apr-11																	
07900.C0IG	Bldg C - Caulking	2	21-Apr-11	26-Apr-11																	
09510.C0IS	Bldg C - Acoustical Ceiling Grid	4	21-Apr-11	28-Apr-11																	
23310.C1IS	Bldg C - HVAC Trim	3	21-Apr-11	27-Apr-11																	
09300.C0IS	Bldg C - Tiling	4	21-Apr-11	28-Apr-11																	
09650.C0IS10	Bldg C - Flooring	4	26-Apr-11	03-May-11																	
11520.C0IG	Bldg C - Projector Mount Installation	1	28-Apr-11	02-May-11																	
22400.C0IS	Bldg C - Plumbing Fixture Installation	8	28-Apr-11	12-May-11																	
06820.C0IG	Bldg C - Glass-Fiber Reinforced Panels	1	03-May-11	04-May-11																	
08141.C0IG	Bldg C - Door and Hardware Installation	6	03-May-11	11-May-11																	
10280.C0IG	Bldg C - Specialty Installation	4	03-May-11	10-May-11																	
10510.C0IS	Bldg C - Locker Installation	2	03-May-11	04-May-11																	
10514.C0IG	Bldg C - Wire Mesh Storage Lockers	1	03-May-11	04-May-11																	
10561.C0IS	Bldg C - Storage Shelving Installation	2	03-May-11	04-May-11																	
11310.C0IG	Bldg C - Residential Appliance Installation	1	03-May-11	04-May-11																	
11400.C0IG	Bldg C - Relocate Ice Maker	1	03-May-11	04-May-11																	
11571.C0IG	Bldg C - Reinstall Air Compressor & Parts Washer	1	03-May-11	04-May-11																	
11400.C1IS	Bldg C - Foodservice Kitchen Equipment Delivery & Setting	2	03-May-11	05-May-11																	
26050.C1IS	Bldg C - Electrical Trim Out	8	04-May-11	18-May-11																	
09510.C1IS	Bldg C - Acoustical Ceiling Tile Installation	4	11-May-11	18-May-11																	
01700.C0IG	Bldg C - Clean Up	2	18-May-11	23-May-11																	



■ Actual Work ■ Critical Remaining Work
■ Remaining Work ◆ Milestone

Project Schedule

Activity ID	Description	Original Duration	Start	Finish	Qtr 1, 2010			Qtr 2, 2010			Qtr 3, 2010			Qtr 4, 2010			Qtr 1, 2011			Qtr 2, 2011		
					Jan	Feb	Mar	Apr	May	Jun	Jul	Aug	Sep	Oct	Nov	Dec	Jan	Feb	Mar	Apr	May	
01750.COIG	Bldg C - Starting and Adjusting HVAC	2	23-May-11	25-May-11																		
11400.C2IS	Bldg C - Foodservice Kitchen Equipment Start-up and Testing	1	24-May-11	25-May-11																		
01790.COIG	Bldg C - Demonstaiton, Training & Acceptance	2	25-May-11	30-May-11*																		
Building D - High School																						
02410.D0IG	Bldg D - Demolition	12	17-May-10 A	08-Jun-10 A																		
01500.D0IO	Bldg D - Asbestos Abatement	7	17-May-10 A	21-May-10 A																		
22100.D0IS	Bldg D - Below Slab Plumbing Rough-In	4	03-Jun-10 A	10-Jun-10 A																		
03201.D0IG	Bldg D - Slab	2	03-Jun-10 A	14-Jun-10 A																		
09210.D0IS	Bldg D - Interior Framing	2	08-Jun-10 A	26-Jul-10 A																		
06100.D0IG	Bldg D - Interior Rough Carpentry	2	10-Jun-10 A	14-Jul-10 A																		
09000.D01G	Bldg D - Patching	4	16-Jun-10 A	23-Jun-10 A																		
22101.D0IS	Bldg D - Above Slab Plumbing Piping	6	17-Jun-10 A	08-Jul-10 A																		
23310.D0IS	Bldg D - HVAC Rough-In	4	17-Jun-10 A	12-Jul-10 A																		
26050.D0IS	Bldg D - Electrical Rough-in	6	22-Jun-10 A	29-Jun-10 A																		
08111.D0IG	Bldg D - Hollow Metal Frame Installation	2	14-Jul-10 A	12-Aug-10 A																		
07210.D0IS	Bldg D - Batt Insulation	1	19-Jul-10 A	20-Jul-10 A																		
09211.D0IS	Bldg D - Interior Wallboard	4	19-Jul-10 A	27-Jul-10 A																		
09212.D0IS	Bldg D - Drywall Finishing	8	19-Jul-10 A	05-Aug-10 A																		
09900.D0IS	Bldg D - Painting	4	26-Jul-10 A	05-Aug-10 A																		
09300.D0IS	Bldg D - Tiling	4	26-Jul-10 A	29-Jul-10 A																		
08141.D0IG	Bldg D - Door and Hardware Installation	2	02-Aug-10 A	29-Sep-10																		
26050.D1IS	Bldg D - Electrical Trim Out	6	02-Aug-10 A	12-Aug-10 A																		
10510.D0IS	Bldg D - Locker Installation	1	05-Aug-10 A	05-Aug-10 A																		
09650.D0IS	Bldg D - Flooring	4	05-Aug-10 A	09-Aug-10 A																		
10280.D0IG	Bldg D - Specialty Installation	3	09-Aug-10 A	12-Aug-10 A																		
22400.D0IS	Bldg D - Plumbing Fixture Installation	4	09-Aug-10 A	12-Aug-10 A																		
23310.D1IS	Bldg D - HVAC Trim	2	09-Aug-10 A	12-Aug-10 A																		
09510.D1IS	Bldg D - Acoustical Ceiling Tile Installation	1	11-Aug-10 A	12-Aug-10 A																		
08800.D0IS	Bldg D - Glazing	4	16-Aug-10 A	16-Aug-10 A																		
11520.D0IG	Bldg D - Projector Mount Installation	1	16-Aug-10 A	16-Aug-10 A																		
09510.D0IS	Bldg D - Acoustical Ceiling Grid	3	16-Aug-10 A	19-Aug-10 A																		
06410.D0IS	Bldg D - Architectural Millwork	4	18-Aug-10 A	23-Aug-10 A																		
07900.D0IG	Bldg D - Caulking	2	18-Aug-10 A	23-Aug-10 A																		
01700.D0IG	Bldg D - Clean Up	5	23-Aug-10 A	27-Sep-10																		
11310.D0IG	Bldg D - Residential Appliance Installation	1	24-Aug-10 A	24-Aug-10 A																		
10561.D0IS	Bldg D - Storage Shelving Installation	1	17-Sep-10 A	18-Sep-10 A																		
01790.D0IG	Bldg D - Demonstaiton, Training & Acceptance	2	28-Sep-10	29-Sep-10*																		
Building E - Elementary																						
02410.E0IG	Bldg E - Demolition	8	17-May-10 A	27-May-10 A																		
22100.E0IS	Bldg E - Below Slab Plumbing Rough-In	4	07-Jun-10 A	24-Jun-10 A																		
03201.E0IG	Bldg E - Slab	4	15-Jun-10 A	29-Jun-10 A																		
09210.E0IS	Bldg E - Interior Framing	2	22-Jun-10 A	01-Jul-10 A																		
22101.E0IS	Bldg E - Above Slab Plumbing Piping	6	01-Jul-10 A	22-Jul-10 A																		
26050.E0IS	Bldg E - Electrical Rough-in	6	06-Jul-10 A	27-Jul-10 A																		

■ Actual Work ■ Critical Remaining Work
■ Remaining Work ◆ Milestone

Project Schedule

Activity ID	Description	Original Duration	Start	Finish	Qtr 1, 2010			Qtr 2, 2010			Qtr 3, 2010			Qtr 4, 2010			Qtr 1, 2011			Qtr 2, 2011		
					Jan	Feb	Mar	Apr	May	Jun	Jul	Aug	Sep	Oct	Nov	Dec	Jan	Feb	Mar	Apr	May	
23310.E0IS	Bldg E - HVAC Rough-In	3	07-Jul-10 A	20-Jul-10 A																		
09000.E01G	Bldg E - Patching	2	15-Jul-10 A	22-Jul-10 A																		
06100.E0IG	Bldg E - Interior Rough Carpentry	2	19-Jul-10 A	27-Jul-10 A																		
09211.E0IS	Bldg E - Interior Wallboard	1	19-Jul-10 A	22-Jul-10 A																		
04273.E0IS	Bldg E - Masonry	3	27-Jul-10 A	03-Aug-10 A																		
09212.E0IS	Bldg E - Drywall Finishing	3	02-Aug-10 A	05-Aug-10 A																		
09300.E0IS	Bldg E - Tiling	8	03-Aug-10 A	05-Aug-10 A																		
09900.E0IS	Bldg E - Painting	1	03-Aug-10 A	05-Aug-10 A																		
22400.E0IS	Bldg E - Plumbing Fixture Installation	8	09-Aug-10 A	12-Aug-10 A																		
23310.E1IS	Bldg E - HVAC Trim	3	09-Aug-10 A	12-Aug-10 A																		
26050.E1IS	Bldg E - Electrical Trim Out	4	09-Aug-10 A	12-Aug-10 A																		
10280.E0IG	Bldg E - Specialty Installation	2	10-Aug-10 A	12-Aug-10 A																		
09510.E0IS	Bldg E - Acoustical Ceiling Grid	1	10-Aug-10 A	11-Aug-10 A																		
10561.E0IS	Bldg E - Storage Shelving Installation	1	11-Aug-10 A	12-Aug-10 A																		
09510.E1IS	Bldg E - Acoustical Ceiling Tile Installation	2	11-Aug-10 A	12-Aug-10 A																		
06410.E0IS	Bldg E - Architectural Millwork	1	18-Aug-10 A	23-Aug-10 A																		
01700.E0IG	Bldg E - Clean Up	4	23-Aug-10 A	27-Sep-10																		
01790.E0IG	Bldg E - Demonstaiton, Training & Acceptance	2	28-Sep-10	29-Sep-10*																		
Building F - Administration																						
02410.F0IG	Bldg F - Demolition	6	19-May-10 A	27-May-10 A																		
09000.F01G	Bldg F - Patching	11	01-Jun-10 A	22-Jun-10 A																		
09210.F0IS	Bldg F - Interior Framing	2	03-Jun-10 A	08-Jun-10 A																		
26050.F0IS	Bldg F - Electrical Rough-in	6	09-Jun-10 A	17-Jun-10 A																		
08111.F0IG	Bldg F - Hollow Metal Frame Installation	1	13-Jul-10 A	14-Jul-10 A																		
09211.F0IS	Bldg F - Interior Wallboard	3	15-Jul-10 A	20-Jul-10 A																		
09650.F0IS	Bldg F - Flooring	4	20-Jul-10 A	29-Jul-10 A																		
09212.F0IS	Bldg F - Drywall Finishing	2	21-Jul-10 A	22-Jul-10 A																		
09900.F0IS	Bldg F - Painting	4	27-Jul-10 A	27-Jul-10 A																		
09510.F0IS	Bldg F - Acoustical Ceiling Grid	2	02-Aug-10 A	05-Aug-10 A																		
08141.F0IG	Bldg F - Door and Hardware Installation	1	09-Aug-10 A	09-Aug-10 A																		
26050.F1IS	Bldg F - Electrical Trim Out	6	09-Aug-10 A	12-Aug-10 A																		
07900.F0IG	Bldg F - Caulking	1	10-Aug-10 A	11-Aug-10 A																		
09510.F1IS	Bldg F - Acoustical Ceiling Tile Installation	2	11-Aug-10 A	12-Aug-10 A																		
11520.F0IG	Bldg F - Projector Mount Installation	1	12-Aug-10 A	12-Aug-10 A																		
01700.F0IG	Bldg F - Clean Up	2	23-Aug-10 A	27-Sep-10																		
10280.F0IG	Bldg F - Specialty Installation	1	09-Sep-10 A	10-Sep-10 A																		
10561.F0IS	Bldg F - Storage Shelving Installation	2	17-Sep-10 A	18-Sep-10 A																		
01790.F0IG	Bldg F - Demonstaiton, Training & Acceptance	2	27-Sep-10	28-Sep-10*																		
Building G - Maintenance																						
31101.AGIS	Bldg G - Site Demo, Excavation & Backfill	10	15-Feb-10 A	27-Sep-10																		
SW001.00IO	Stop Work Order - Bldg G	1	25-Feb-10 A	22-Apr-10 A																		
MCR01.00IO	MCR 003 Bldg G Relocation	24	22-Apr-10 A	28-Sep-10 A																		
03200.G0IG	Bldg G - Foundations	7	09-Aug-10 A	14-Sep-10 A																		
22100.G0IS	Bldg G - Below Slab Plumbing Rough-In	6	16-Aug-10 A	25-Aug-10 A																		
26050.G0IS	Bldg G - Electrical Rough-in	12	16-Aug-10 A	25-Aug-10 A																		

■ Actual Work ■ Critical Remaining Work
■ Remaining Work ◆ Milestone

Project Schedule

Activity ID	Description	Original Duration	Start	Finish	Qtr 1, 2010			Qtr 2, 2010			Qtr 3, 2010			Qtr 4, 2010			Qtr 1, 2011			Qtr 2, 2011		
					Jan	Feb	Mar	Apr	May	Jun	Jul	Aug	Sep	Oct	Nov	Dec	Jan	Feb	Mar	Apr	May	
03201.G0IG	Bldg G - Slab	8	02-Sep-10 A	09-Sep-10 A																		
13341.G0IG	Bldg G - Metal Building Erection	15	15-Sep-10 A	11-Oct-10																		
05500.G0IG	Bldg G - Metal Fabrication Installation	3	12-Oct-10	18-Oct-10																		
08331.G0IS	Bldg G - Overhead Door Installation	3	12-Oct-10	14-Oct-10																		
09210.G0IS	Bldg G - Interior Framing	2	12-Oct-10	14-Oct-10																		
32141.G0IG	Bldg G - Sidewalks	2	12-Oct-10	13-Oct-10																		
23310.G0IS	Bldg G - HVAC Rough-In	4	12-Oct-10	18-Oct-10																		
06100.G0IG	Bldg G - Interior Rough Carpentry	1	14-Oct-10	18-Oct-10																		
07210.G0IS	Bldg G - Batt Insulation	5	14-Oct-10	25-Oct-10																		
08111.G0IG	Bldg G - Hollow Metal Frame Installation	2	14-Oct-10	19-Oct-10																		
22101.G0IS	Bldg G - Above Slab Plumbing Piping	10	14-Oct-10	02-Nov-10																		
23310.G1IS	Bldg G - HVAC Trim	2	14-Oct-10	19-Oct-10																		
26050.G1IS	Bldg G - Electrical Trim Out	12	14-Oct-10	04-Nov-10																		
08800.G0IS	Bldg G - Glazing	4	14-Oct-10	21-Oct-10																		
09211.G0IS	Bldg G - Interior Wallboard	4	25-Oct-10	01-Nov-10																		
09212.G0IS	Bldg G - Drywall Finishing	8	01-Nov-10	15-Nov-10																		
07900.G0IG	Bldg G - Caulking	2	15-Nov-10	16-Nov-10																		
09900.G0IS	Bldg G - Painting	8	15-Nov-10	30-Nov-10																		
06410.G0IS	Bldg G - Architectural Millwork	2	30-Nov-10	02-Dec-10																		
08141.G0IG	Bldg G - Door and Hardware Installation	2	30-Nov-10	02-Dec-10																		
10280.G0IG	Bldg G - Specialty Installation	1	30-Nov-10	30-Nov-10																		
22400.G0IS	Bldg G - Plumbing Fixture Installation	4	30-Nov-10	07-Dec-10																		
01700.G0IG	Bldg G - Clean Up	3	07-Dec-10	13-Dec-10																		

